
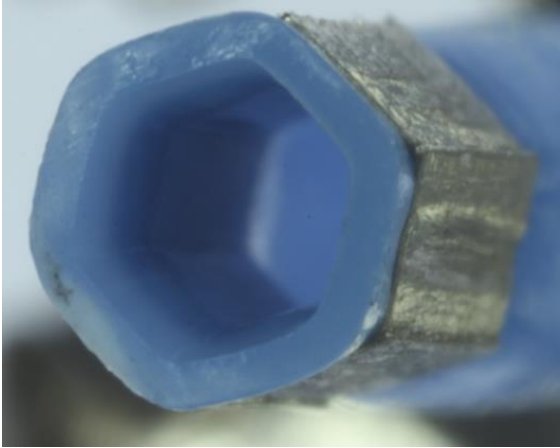


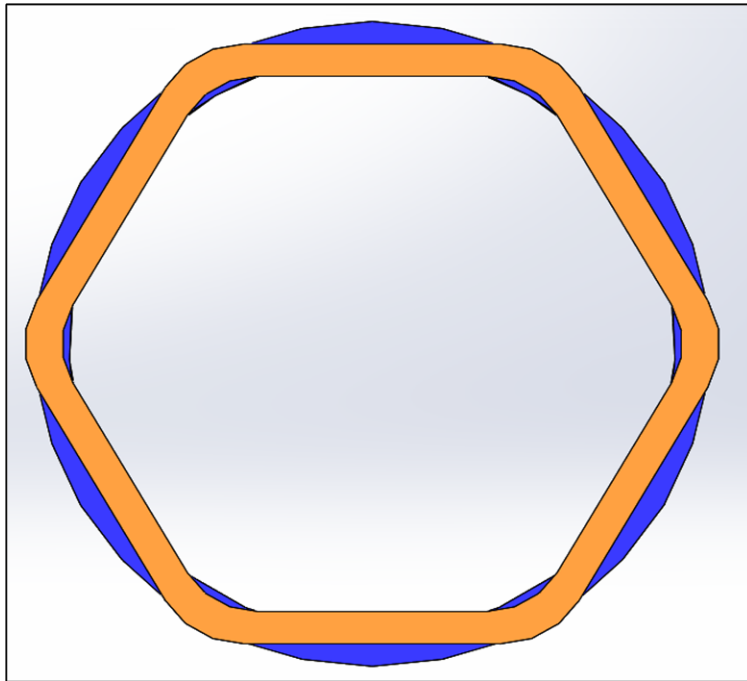
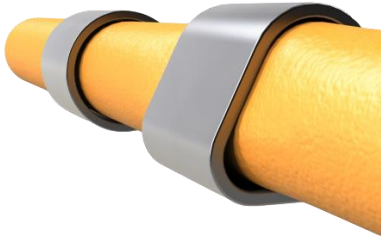
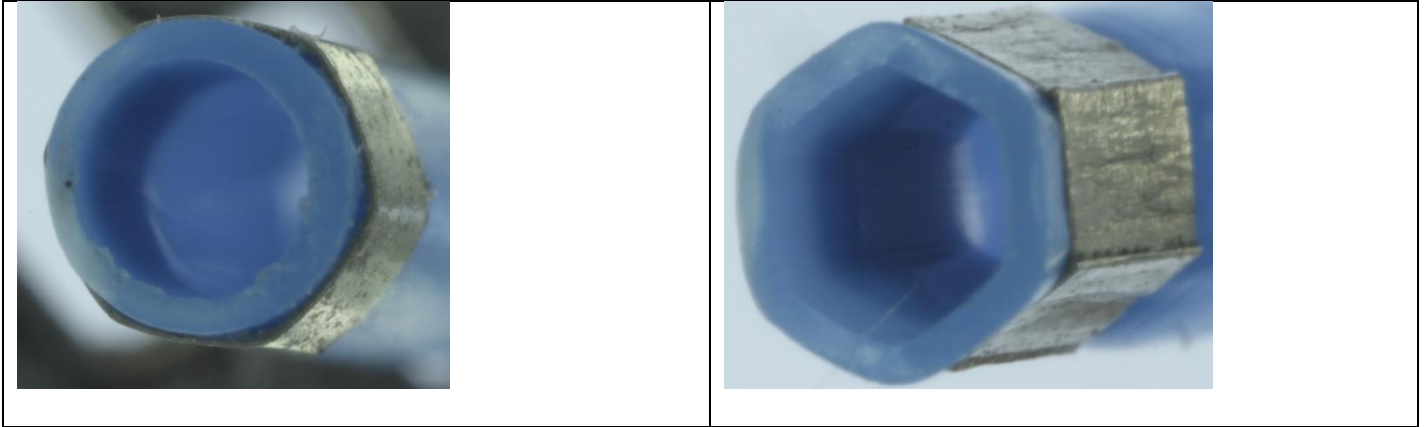
Before a marker band can be swaged it must be positioned on the catheter then precrimped. For a detailed comparison of crimping and swaging, reference knowledge base article: *MS105 Crimping versus Swaging*.



Precrimping is a single, large deformation of the band to keep it in position during swaging. The band is formed into a polygon; the same shape as the crimper die cavity. A good precrimp is determined by the band shape and placement retention. The band perimeter length is conserved during crimping. Therefore, a band that is crimped too small will buckle. Buckling occurs when **the crimping force is enough to cause the band to close past the crimping shape**. Over crimping of the band causes the corners to become sharp, the flat sections to bow in, or the band to fracture. The corners or bend radii of the crimped band should be round with smooth transitions to the flats. The flat sides should have a slight convex bow away from the center.

Product dimensions

Good Precrimp	Too-small Precrimp
Round bends, flat or convex sides 	Folded over corners, concave sides 



Band Cross-Sections
Blue = Original Band
Orange = Crimped Band